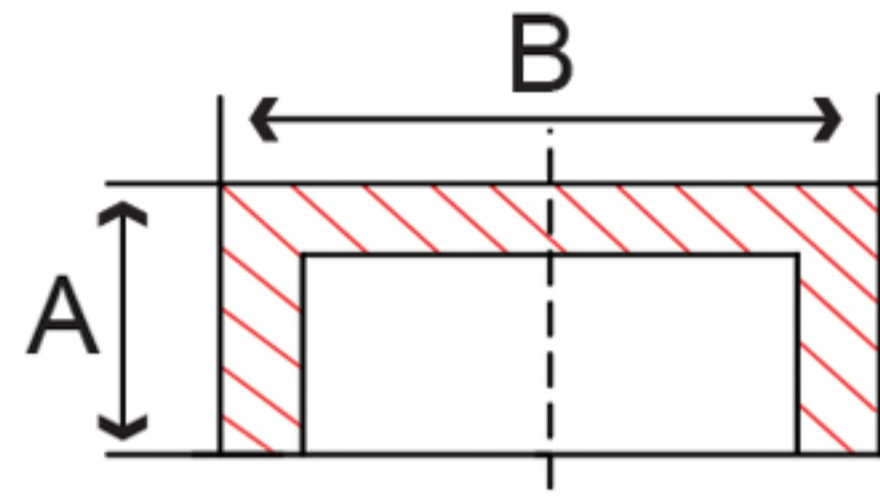


**Fig. 52C 3 – Cap**



Size IN	Part Number	A IN	B IN	Master	Weight LB
1/4	52C 3002	0.71	0.87	300	0.1
3/8	52C 3003	0.77	1.03	250	0.1
1/2	52C 3004	0.90	1.27	130	0.2
3/4	52C 3006	1.02	1.50	80	0.3
1	52C 3010	1.07	1.80	50	0.5
1-1/4	52C 3012	1.22	2.23	30	0.9
1-1/2	52C 3014	1.29	2.55	25	1.3
2	52C 3020	1.53	2.96	15	2.1
2-1/2	52C 3024	1.65	3.64	10	3.1
3	52C 3030	1.77	4.27	5	6.0
4	52C 3040	1.91	5.40	3	9.3

